

Your EcoStruxure Building Operation system is now connected!

Using Schneider Electric's EcoStruxure Building Operation (EBO)?
Do you need to connect it with other systems?

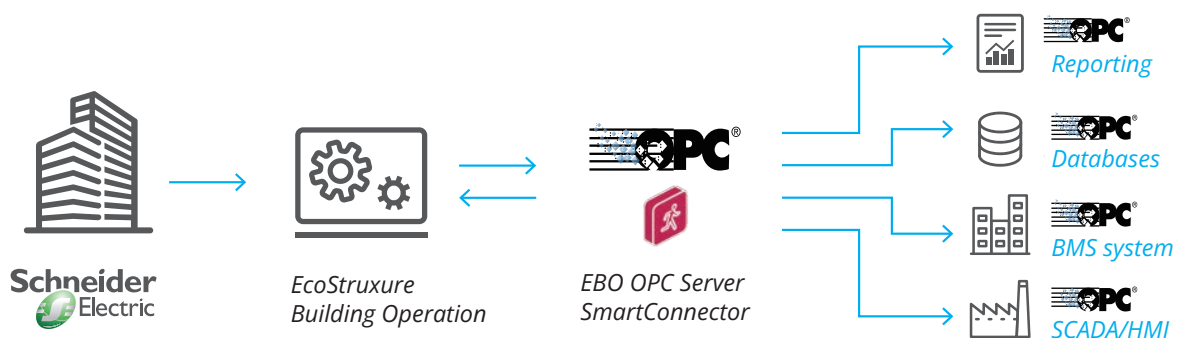
Do you need to connect your Schneider Electric's EcoStruxure Building Operation (EBO) with 3rd party OPC clients?
Now it is possible with Control-See **EBO-OPC server** extension

Easy implementation

Most BMS and SCADA systems support OPC client functionality, so implementation is easy and straightforward. The **EBO-OPC server** exposes all the values defined in the EBO system and in all the controllers that are connected to it. You may browse your EBO values, select the values you want to share, and the data will be transferred to your other system.

Performance is important!

Using Smart Connector technology, only value changes are pushed from your EBO system to the OPC server and then to the OPC client. No polling is required, ensuring optimal system performance!



3rd party products



What is OPC?

In today's complex economy, information is the key to business success and profitability. OPC technologies were created to allow information to be easily and securely exchanged between diverse platforms from multiple vendors and to allow seamless integration of those platforms without costly, time-consuming software development. This frees engineering resources to do the more important work of running your business.

Features

- High performance using subscription mode
- Support for OPC UA and DA
- Running as Windows service for improved availability
- Automatic reconnection with the EBO system
- Discovery of all EBO values and alarms (including remote controllers)
- Scalability - The number of the EBO values you can share with the OPC clients is virtually unlimited. The only limit is the amount of memory (RAM) in your computer
- Viewing and modifying the Forced status of EBO values(points)
- Viewing EBO alarm information in the OPC client

OPC Specifications

- OPC DA (OPC Data Access) 1.0
- OPC DA (OPC Data Access) 2.0
- OPC DA (OPC Data Access) 3.0
- OPC UA (OPC Unified Architecture)

The **EBO-OPC Server** supports the following features and operations:

- EBO Value discovery
- EBO Value browsing
- Subscription mode (only values changes are sent to the OPC client)
- OPC Single read and Single write
- Runs as a Windows Service

Specifications

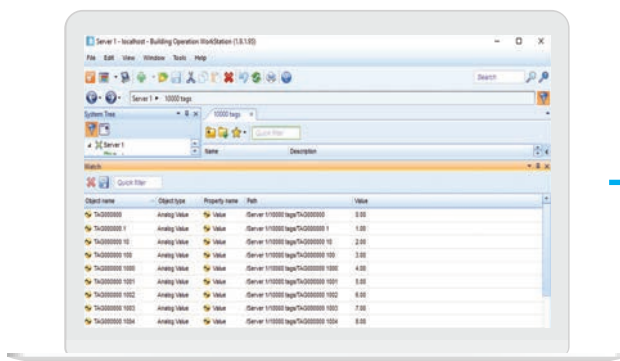
Software requirements

The server requires, at a minimum, the following software:

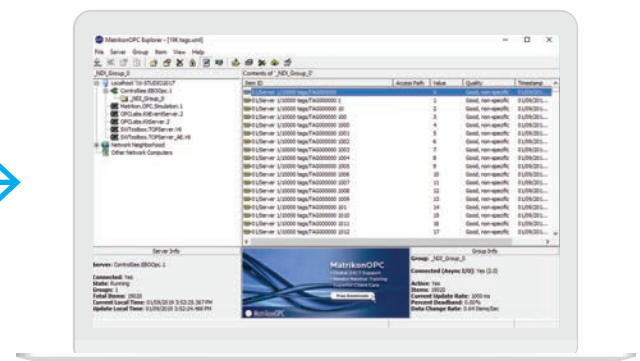
- Microsoft Windows® 10, Windows® 11, Microsoft Windows® Server 2012, Microsoft Windows® Server 2016, Microsoft Windows® Server 2019, Microsoft Windows® Server 2022.
- Schneider Electric Building Operation Workstation (EBO) Version 1.9.1.95 or higher
- Schneider Electric SmartConnector version 2.4.7 or higher.

Hardware requirements

- Intel® Pentium® 4 Processor
- 512 MB RAM
- Minimum 32 MB of available hard disk space
- Super VGA (800 × 600) or higher-resolution monitor with 256 colors
- Mouse pointing device



Schneider Electric's EcoStruxure Building Operation



OPC Client software